

GEN AIR 8000 *Plus*

PRESSURE RELIEF SYSTEMS



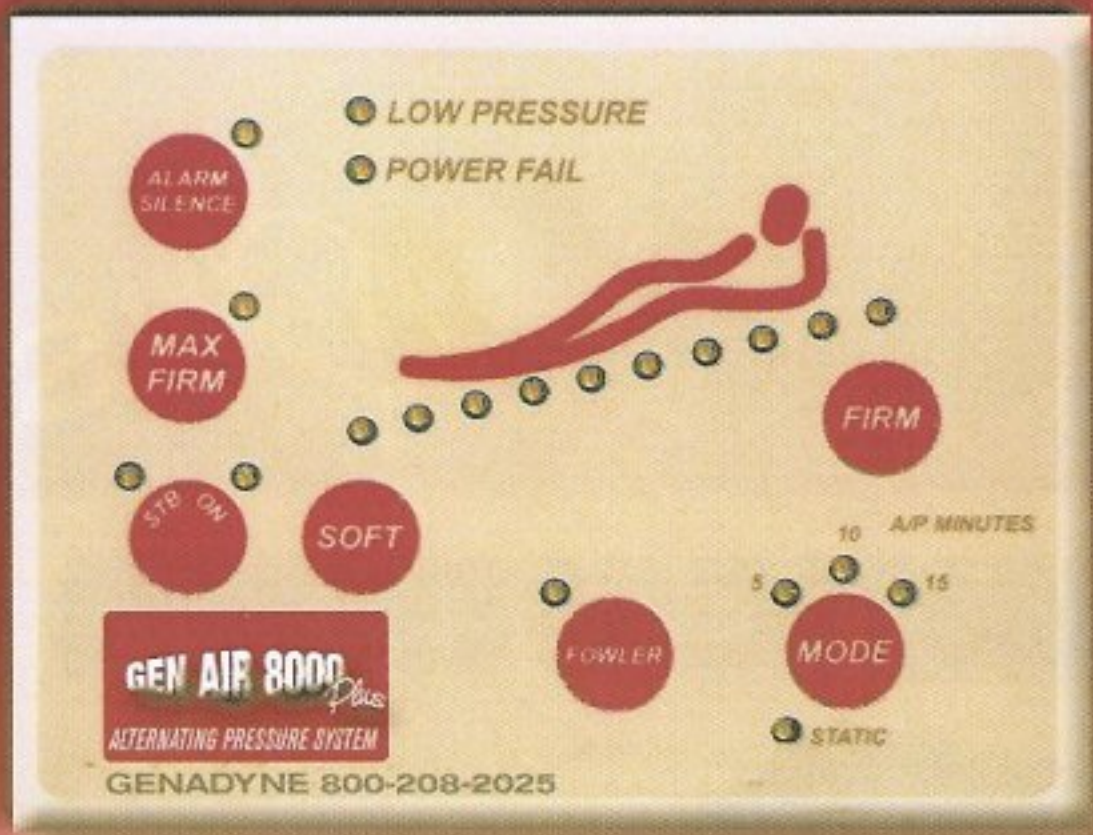
Low Air Loss System

Alternating Pressure System

The Alternating Pressure System has multiple cycle settings ranging from five, ten, or fifteen minutes and the added benefit of 50 liters of Low Air Loss. The Low Air Loss System has the benefit of the Derma Pulse feature for "Pain Management." Both mattresses have the beneficial Fowler feature. The mattresses are constructed with eight inches of cell flotation and have a lower safety mattress for patient transfer or power failure. The GenAir Support Systems are easy to maintain and keep clean and are equipped with a CPR valve for quick emergency air release.

The Gen Air Support Systems incorporate the newest technologies in pressure relief mattresses. The Alternating Pressure and Genuine Low Air Loss Systems gently massage the epidermis while continuously changing contact points with the skin's surface. This helps to eliminate the development of and provide easy and effective treatment for pressure ulcers.

For more information about Genadyne products call 718-460-5516 or 800-208-2025 / www.genadyne.com



Alternating Pressure System MNS 400

Features:

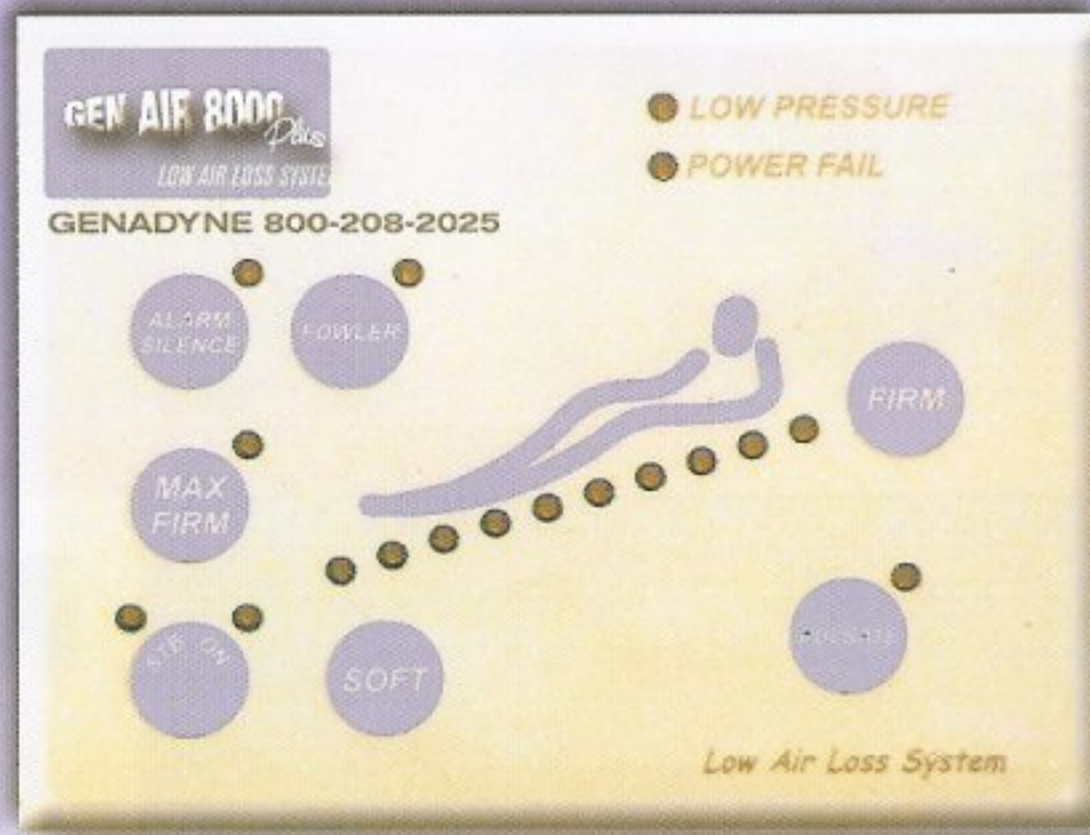
- ⇒ Single pump 50 liters per minute air flow.
- ⇒ Balanced pump for ultra quiet running.
- ⇒ 5, 10, or 15 minutes adjustable cycle time.
- ⇒ Heavy wall molded ABS (UL94-V0) enclosure for low noise and durability.
- ⇒ Closed loop pressure sensor control system.
- ⇒ Soft/firm comfort control key with 10 LEDs.
- ⇒ Fowler key with LED.
- ⇒ Soft touch, easy wipe, sealed keypad.
- ⇒ Lower safety mattress supports the patient in the event of power failure or patient transfer for up to 12 hours.
- ⇒ Dual connector rapid attach and CPR deflate at the power unit.
- ⇒ Low pressure alarm.
- ⇒ Power failure detection alarm.
- ⇒ Alarm silence key.
- ⇒ Max Firm automatically readjusts bed system to preprogrammed profile setting after 30 minutes.
- ⇒ Mattress inflates in 12 minutes.

Specifications: CE, UL2601, CSA, ETL

- ⇒ Power: 115V AC, 60Hz, 1A 220V/240V AC, 50Hz, 0.5A
- ⇒ Weight: Control Unit – 9 lbs. (4kg) Mattress – 22 lbs. (10kg)
- ⇒ Maximum patient weight – 350 lbs. (160kg)
- ⇒ Dimensions: Control Unit – 11" (27cm) W x 12.5" (31cm) H x 5.25" (13cm) D
Mattress – 35" (89cm) W x 80" (203cm) L x 8" (20cm) H (U.S.) 35" (89cm) W x 76" (193cm) L x 8" (20cm) H (Eu.)

For more information about Genadyne products call 800-208-2025

GEN AIR 8000 Plus



Low Air Loss System MNS 500

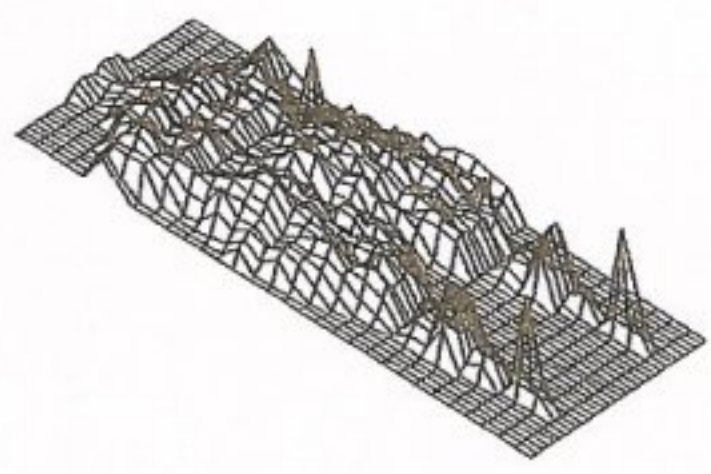
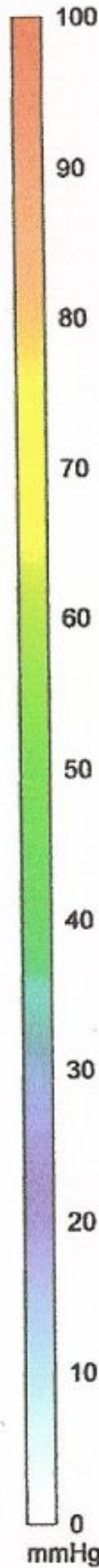
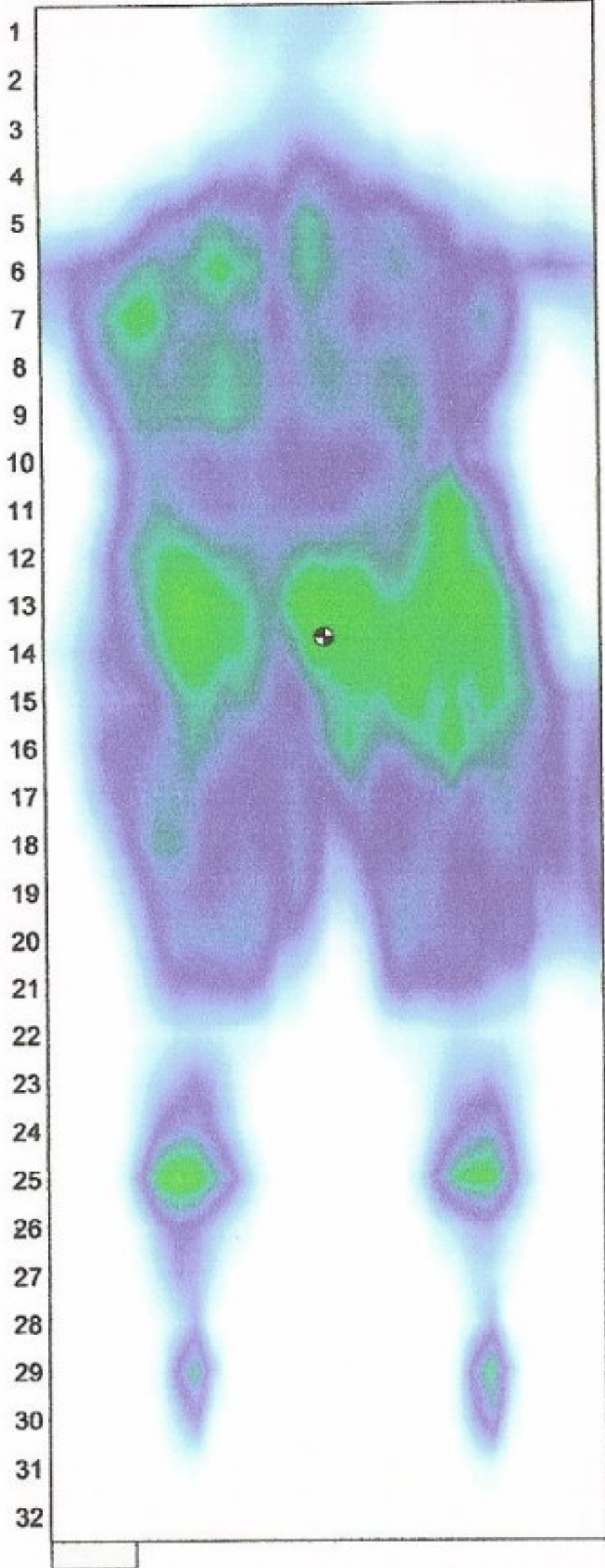
Features:

- ⇒ True Low Air Loss – Greater than 40 cfm air flow. 135 liters per minute.
- ⇒ Heavy wall molded ABS (UL94-V0) enclosure for low noise and durability
- ⇒ Closed loop pressure sensor control system. Eliminates concerns of changes in mattress interface pressure due to ambient temperatures and pressure changes.
- ⇒ Washable foam air filter.
- ⇒ Pulsate – Every 30 seconds, the pressure increases and decreases in each cell.
- ⇒ Soft/firm comfort control key with 10 LEDs.
- ⇒ Max Firm automatically readjusts bed system to preprogrammed profile setting after 15 minutes.
- ⇒ Fowler key with LED.
- ⇒ Soft touch, easy wipe, sealed keypad.
- ⇒ Lower safety mattress supports the patient in the event of power failure or patient transfer for up to 12 hours.
- ⇒ Single connector rapid attach and CPR deflate at the power unit.
- ⇒ Low pressure alarm.
- ⇒ Power failure detection alarm.
- ⇒ Alarm silence key.
- ⇒ Mattress inflates in 30 seconds.

Specifications: CE, UL2601, CSA, ETL

- ⇒ Power: 88~132/176~264 VAC, 47~63Hz, 2A
- ⇒ Weight: Control Unit – 9 lbs. (4kg) Mattress – 22 lbs. (10kg)
- ⇒ Maximum patient weight – 350 lbs. (160kg)
- ⇒ Dimensions: Control Unit – 11" (27cm) W x 12.5" (31cm) H x 5.25" (13cm) D
Mattress – 35" (89cm) W x 80" (203cm) L x 8" (20cm) H (U.S.) 35" (89cm) W x 76" (193cm) L x 8" (20cm) H (Eu.)

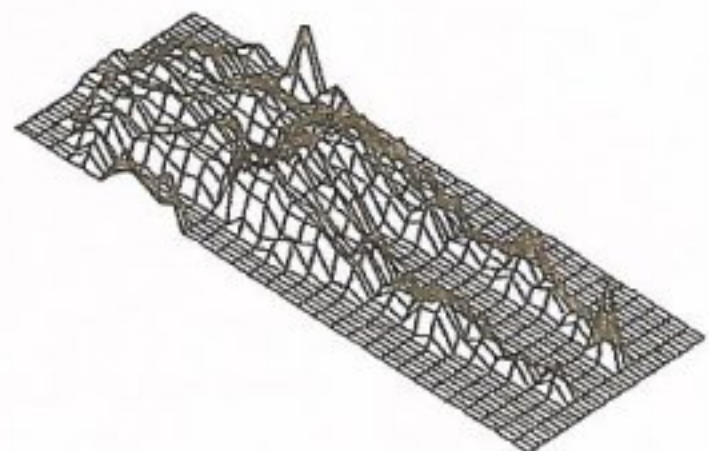
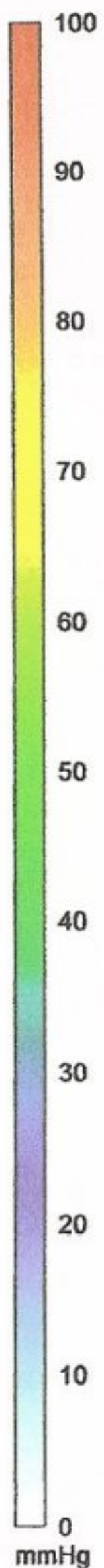
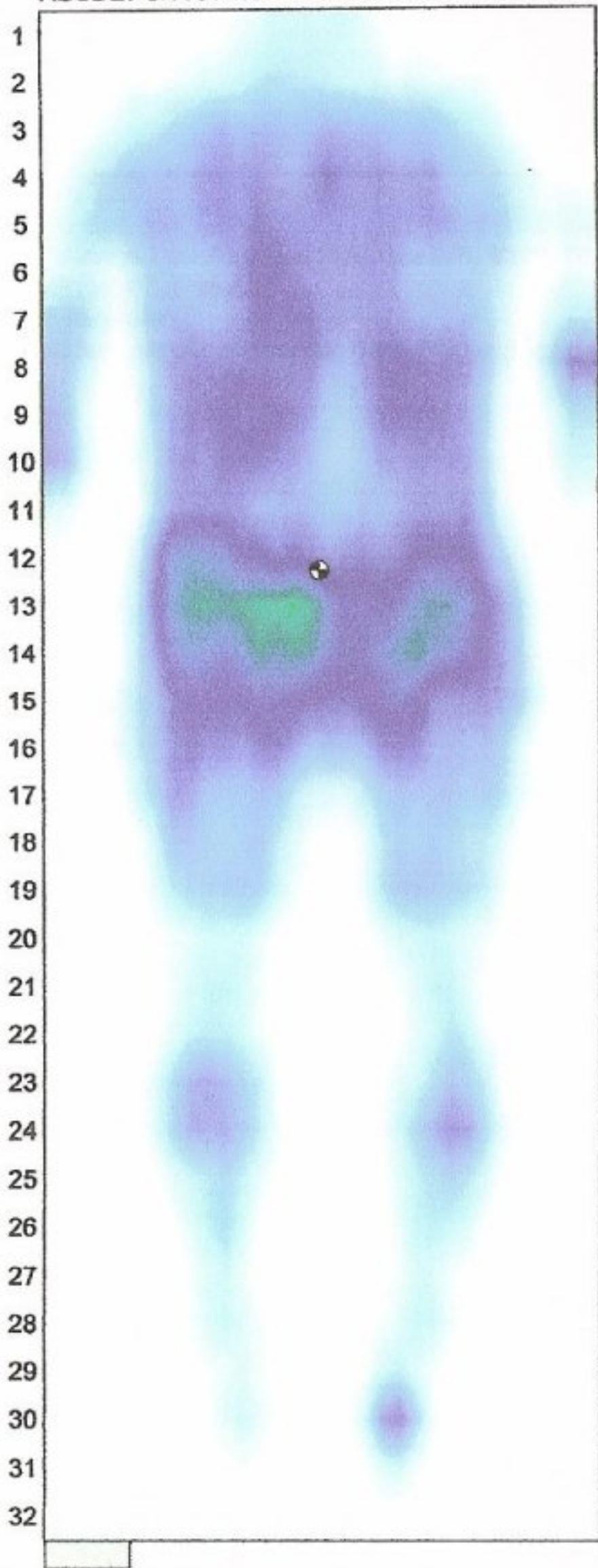
ABCDEFGHIJKLMN OPQRSTUVWXYZ abcdef



Sensors included	580
Variation coefficient	50.4%
Standard deviation	6.83
Average pressure	13.6
Maximum pressure	47
Center of pressure	16.6, 13.7

Genadyne Low Air Loss Mattress with MNS-500 Pump Controller
Setting: # , Pulsate
305 lb. Female
Standard Medline Hospital Bed with pillow under head.

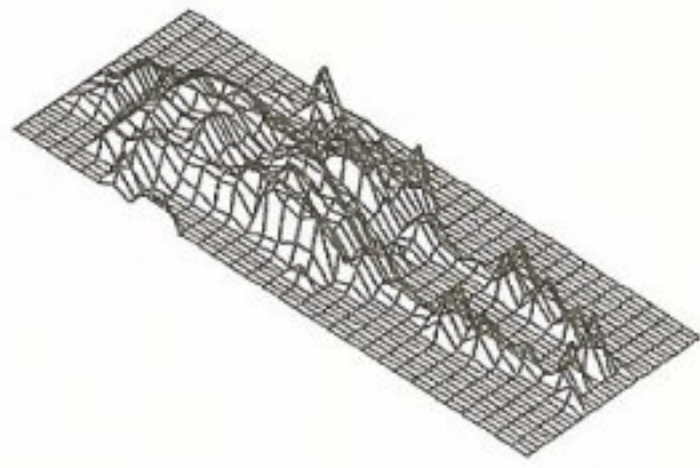
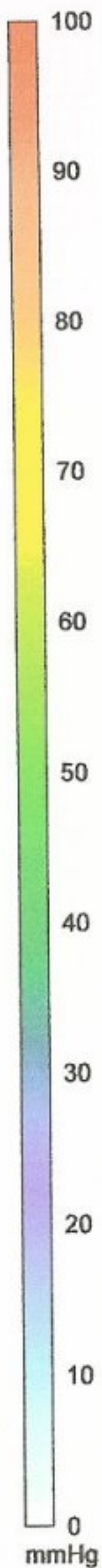
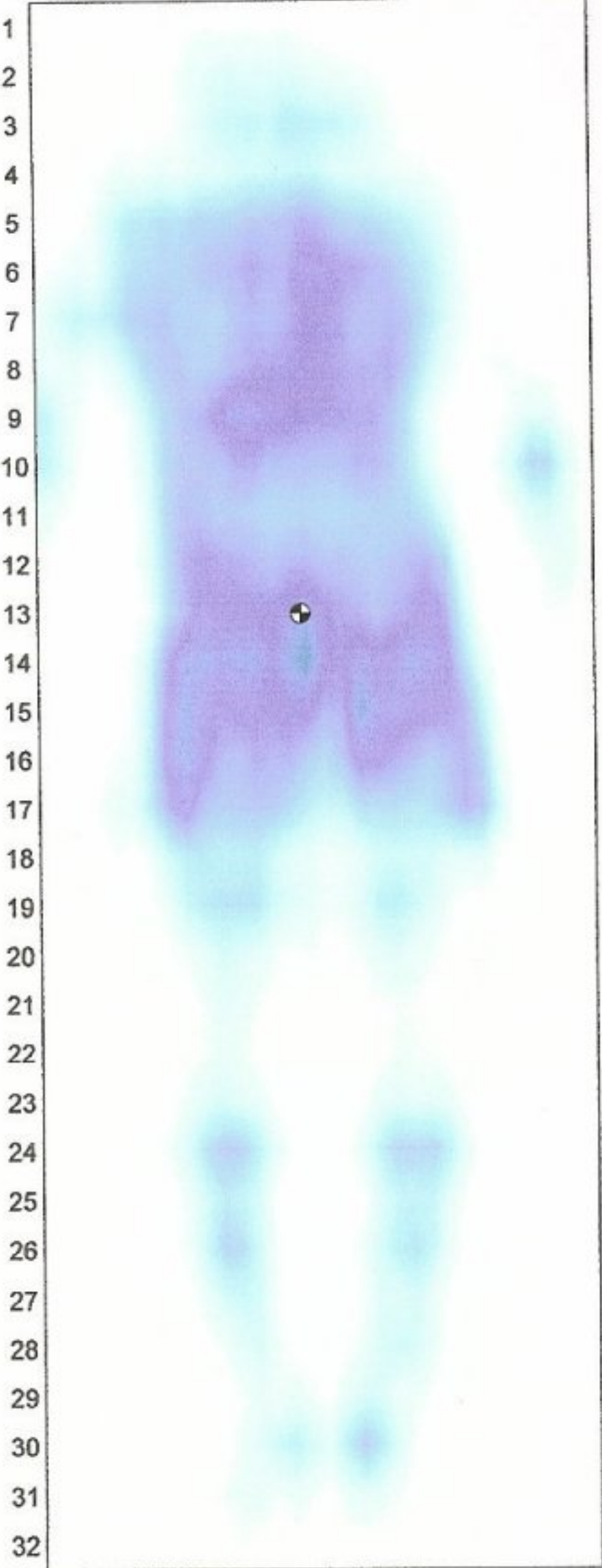
ABCDEFGHIJKLMN OPQRSTUVWXYZ abcdef



Sensors included	520
Variation coefficient	60.0%
Standard deviation	7.14
Average pressure	11.9
Maximum pressure	37
Center of pressure	16.4, 12.3

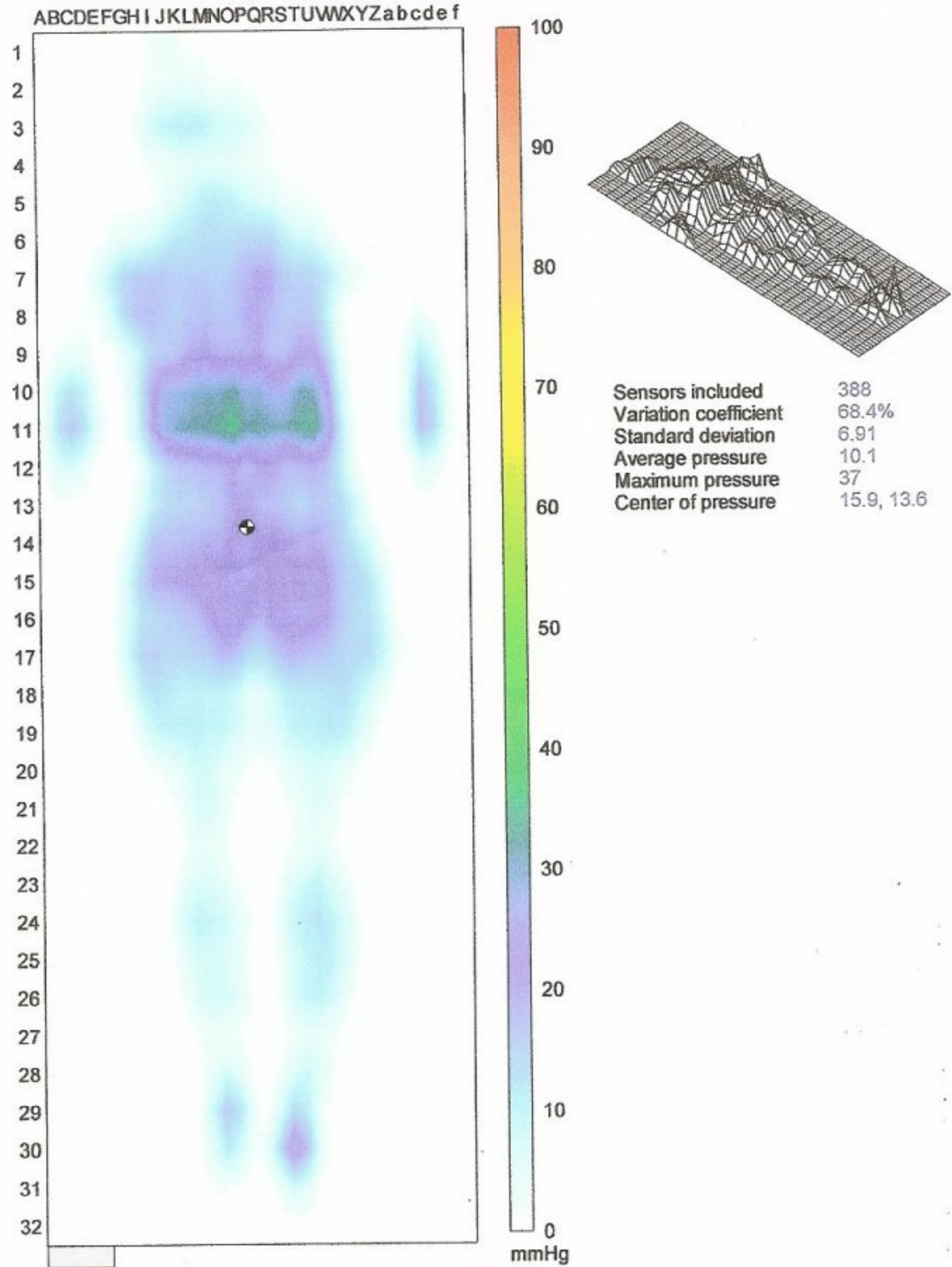
Genadyne Low Air Loss Mattress with MNS-500 Pump Controller
Setting #3 Pulsate
225 Lb Male
Foam pillow placed under head, Standard Hospital Bed

ABCDEFGHIJKLMNOPQRSTUVWXYZabcdefghijklmnopqrstuvwxyz



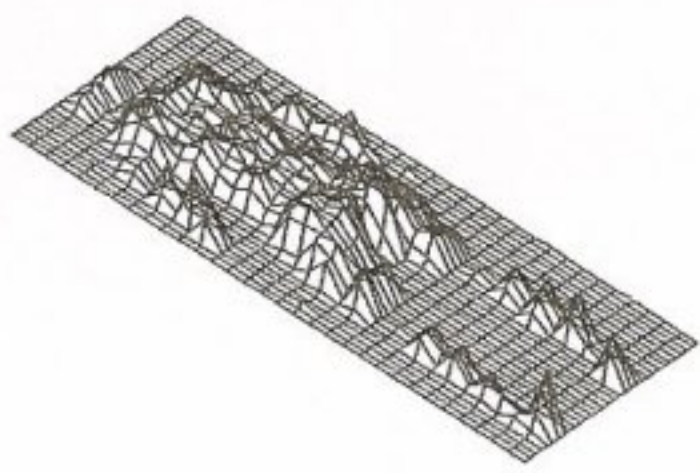
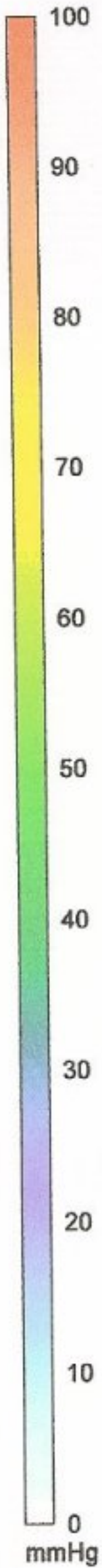
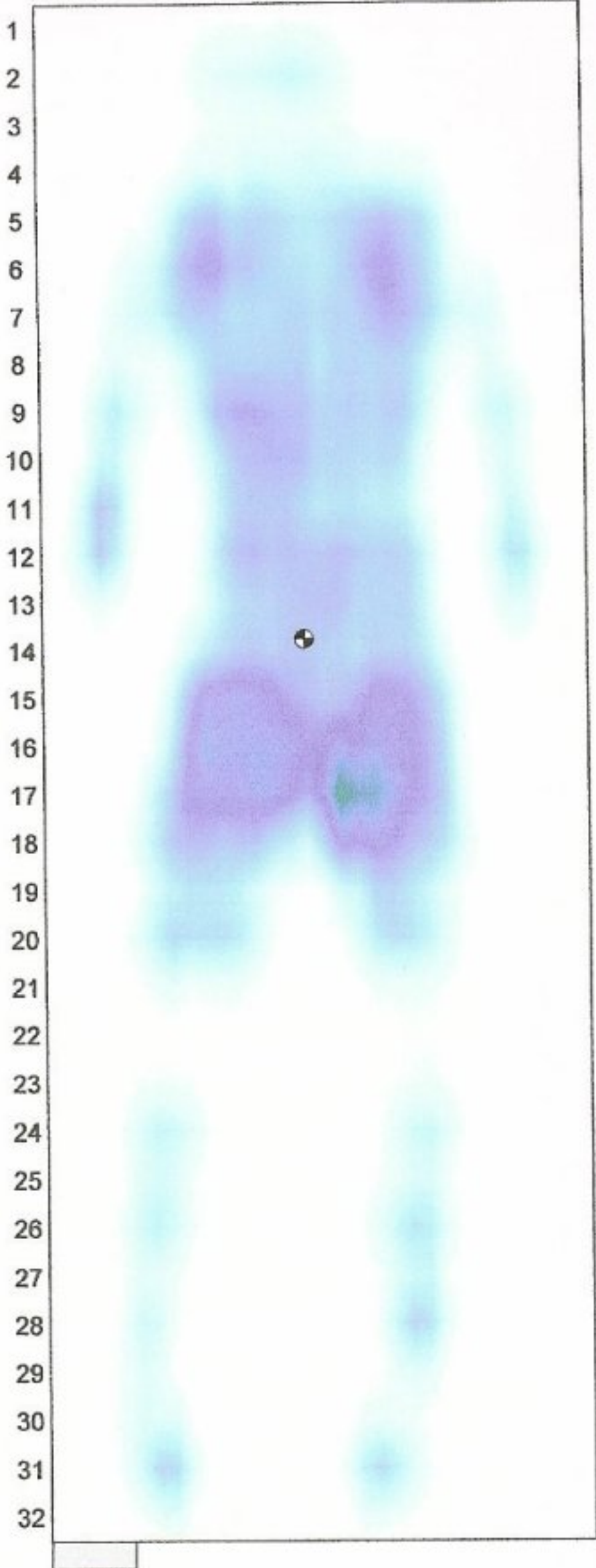
Sensors included	408
Variation coefficient	60.5%
Standard deviation	6.72
Average pressure	11.1
Maximum pressure	31
Center of pressure	15.6, 13.0

Genadyne Low Air Loss Mattress with MNS-500 Pump Controller
Setting: #3 , Pulsate
165 Lb Male
Pillow Placed under head. Standard Medline Hospital Bed



Genadyne Low Air Loss Mattress with MNS-500 Pump Controller
 Setting #2, Pulsate
 135 lb Female
 Pillow placed under head, Standard Hospital Bed

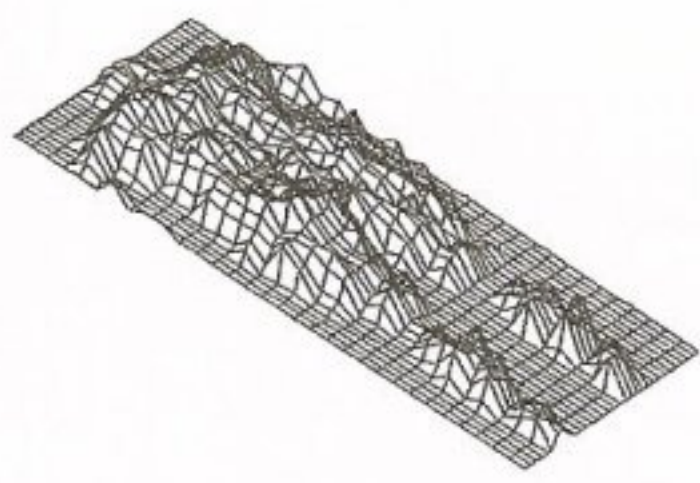
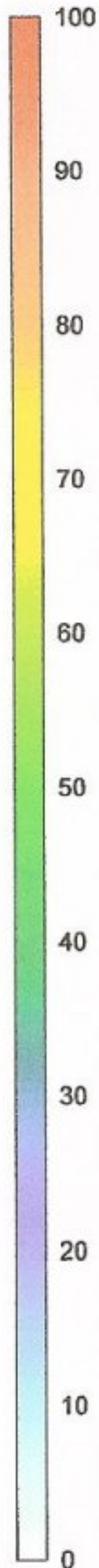
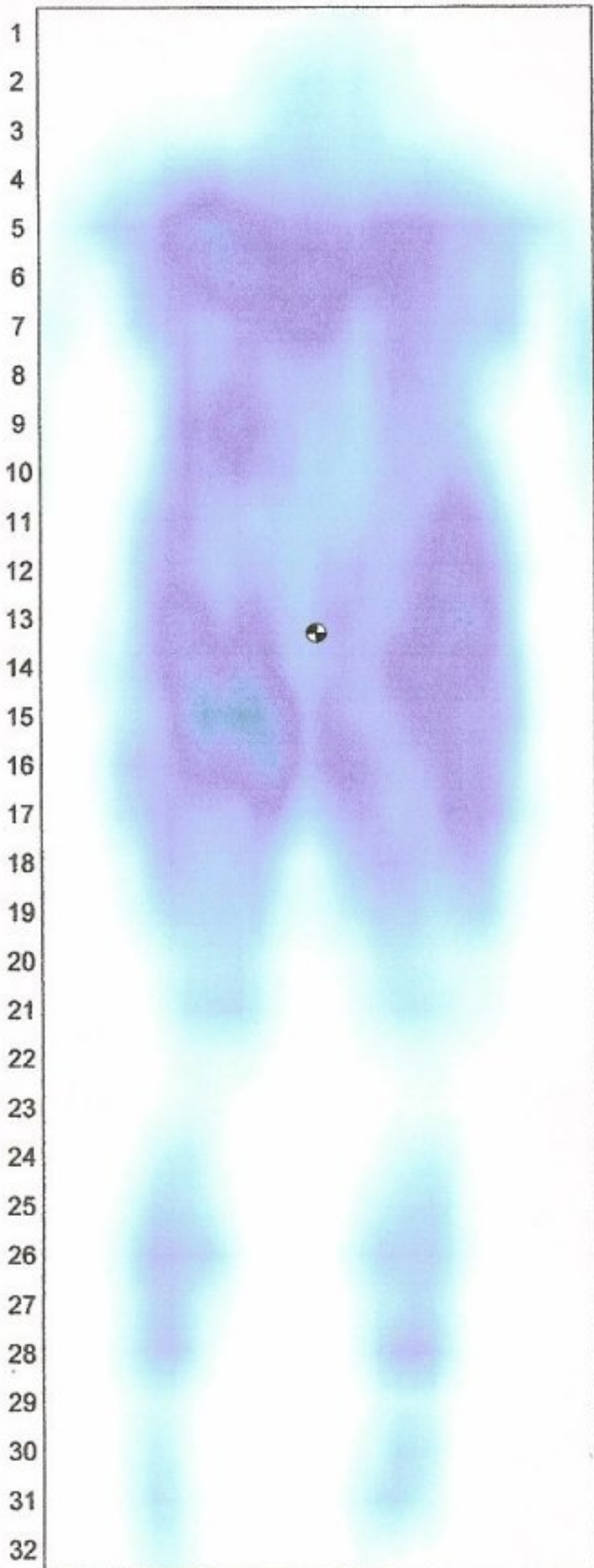
ABCDEFGHIJKLMN OPQRSTUVWXYZ abcdef



Sensors included	363
Variation coefficient	59.7%
Standard deviation	6.03
Average pressure	10.1
Maximum pressure	35
Center of pressure	15.9, 13.8

Genadyne Low Air Loss Mattress with MNS-500 Pump Controller
 Setting #2 Pulsate
 130 lb Male
 Foam pillow placed under head, Standard hospital bed

ABCDEFGHIJKLMN O PQRSTU VWXYZ abcdef



Sensors included	548
Variation coefficient	51.6%
Standard deviation	6.12
Average pressure	11.9
Maximum pressure	31
Center of pressure	16.4, 13.3

Genadyne Low Air Loss Mattress with MNS-500 Pump Controller
 Settings: #7, Pulsate
 285 lb. Male
 Standard Medline Hospital Bed, Pillow placed under head